

SESSION 8

The HOS <> Board Chair
Relationship

The Changing Role of the HOS

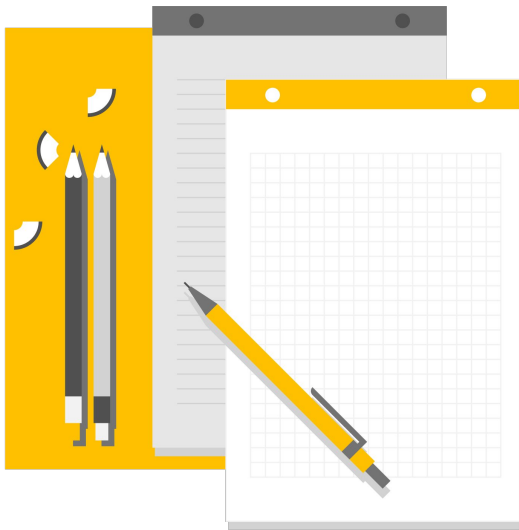
<u>1996</u>	<u>2024</u>
Curriculum focused	People focused
Master teacher	Master planner
Deeply philosophical	Deeply committed
Educator	Executive
General/limited business knowledge	Extensive business knowledge
Problem-solver	Strategic planner
Relational	Fundraiser
Headmaster (COO)	Head of School (CEO)

Works **in** the school

Works **on** the school



Objectives



- Share *my* Testimonial
- Identify *your* “Crafting”
- Clarify *our* “Commission”
- Employ Best Practices for a Healthy HOS and Board Relationship

My Testimony

- A bit about me: Sovereign “Crafting”

My Testimony

- A bit about me: Sovereign “Crafting”
- The point of the testimony is for you

My Testimony

- A bit about me: Sovereign “Crafting”
- The point of the testimony is for you
- Your “Crafting”

My Testimony

- A bit about me: Sovereign “Crafting”
- The point of the testimony is for you
- Your “Crafting”
- The point of your testimony is about Him

Identify *Your* “Crafting”

- What’s your story?

Share 1-2 specific items (talents, trainings, or trials) with your table where you can see God’s “crafting” you for your current calling.

Commissioned

A TASK ENTRUSTED TO ONE
AS AN AGENT FOR ANOTHER

Commissioned

The heart of the *Commissioned* ...

Commissioned

The heart of the *Commissioned* ...

1. Sees more than what others believe is real

Commissioned

The heart of the *Commissioned* ...

1. Sees more than what others believe is real
2. Loves more than what others believe is safe

Commissioned

The heart of the *Commissioned* ...

1. Sees more than what others believe is real
2. Loves more than what others believe is safe
3. Prays for more than what others think is possible

Commissioned

The heart of the *Commissioned* ...

1. Sees more than what others believe is real
2. Loves more than what others believe is safe
3. Prays for more than what others think is possible
4. Sacrifices more than what others think is wise

Commissioned

The heart of the *Commissioned* ...

1. Sees more than what others believe is real
2. Loves more than what others believe is safe
3. Prays for more than what others think is possible
4. Sacrifices more than what others think is wise
5. Serves more for others good and God's glory

Commissioned

The heart of the *Commissioned* ...

1. Sees more than what others believe is real
2. Loves more than what others believe is safe
3. Prays for more than what others think is possible
4. Sacrifices more than what others think is wise
5. Serves more for others good and God's glory

...like Jesus

Employ Best Practices for a Healthy HOS and Board Relationship

The Posture

- Ambassador
- Advocate

The Practice

- Educator
- Advisor
- Resource

Resources

